

X-ray Baggage Scanner with a Floor Conveyor



- DSSP100100C x-ray baggage scanner is dual-energy x-ray security inspection equipment. The X-ray examination system uses X-ray scanning imaging technology to scan items.
- According to the images, the inspector determine whether entrainment of banned items.
- 1010mm (wide) ×1010mm (high) channel size meet the demand for large goods inspection.
- DSSP100100C type owns the effect of perfect clarity imaging. With the help of many images processing function, it can easily and quickly help the inspectors to distinguish the different objects.
- In the process of scanning imaging, the system to provide automatic image storage and according to work by inspectors need to splice storage in two ways. If you need to one image to check, inspection person can playback past images at any time.

■ Features

- ✓ Alarm by sounds & light: Alarm by sounds and light when conform to condition (optional).
- ✓ Network interface: Could be connect local area network and support multi-terminal check baggage at same times.
- ✓ Safety ray: Transmit ray under automatic control, avoids the miss.
- ✓ Image monitoring for user-friendly: The monitor use fold, rotary system, operators adjust the monitor position willfully according to own need, reduces wearily.
- ✓ Portable structure design, independent operating table.
- ✓ Turn off by a key control: Turn off the machine only need one step: revolves the key. The equipment automatic security close-down, does not need complex many steps, is simpler.
- ✓ Eagle-eye: Could be expediently observing enlargement area.
- ✓ Estimate malfunction by self: Automatic estimate malfunction and prompt message, helpful for the maintenance.

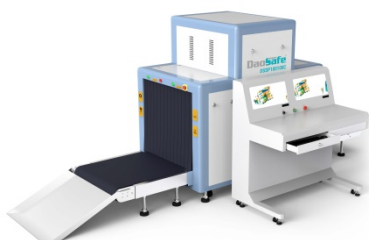
X-ray Generator

- Generate Direct: Vertically Downward
- Generate Angle: 80 degree
- Anode Voltage: 100-160Kv(adjustable)
- Anode Power: 0.4 to 1.2mA(adjustable)
- Cooling / Duty Cycle: Sealed oil bath with forced air /100%

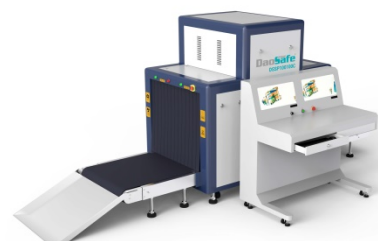
Image System

- X-ray Sensor: L-Shaped Photodiode Array (dual-energy), 12bit Deep.
- Monitor: High Resolution Color, LCD Accord, 19 inch.
- Image Processing: Edge enhancement, image strengthening, image lightening, reducing darkening, image returning, and image retrieval.
- Image Grey Level: 4096.
- Image Max Resolution: 1024 * 1280 pixels.
- Image Processing: 24bit for processing real time.
- Image storage: storage more than 10000 pictures in real time.
- Objects Distinguish: Organic in orange; inorganic in blue; mixture in green.
- Color quality: 32 bit real colors.

■ Colors

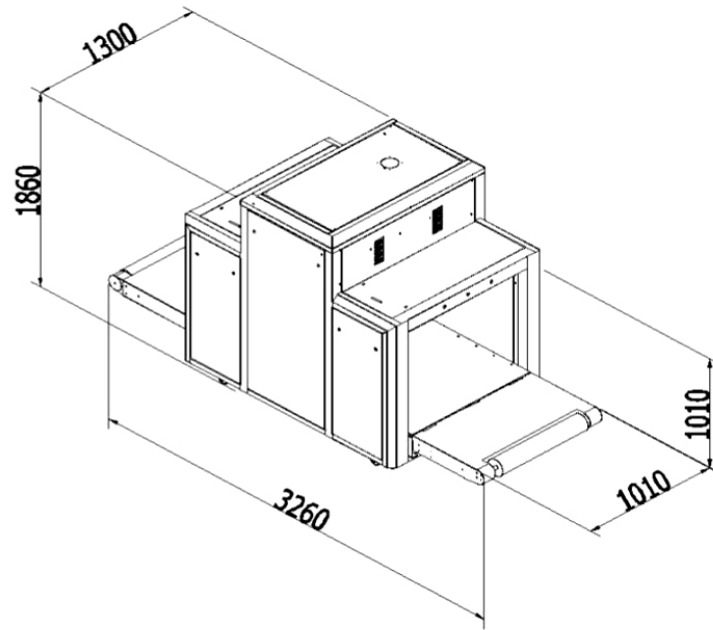


Light blue color (Default)



Deep blue color (Optional)

■ Specifications



Model No.	DSSP100100C
Brand	DAOSAFE
Color	Light blue (default); deep Blue (optional)
Tunnel Size	1010(W)×1010(H)mm
Dimension	3260mm(L)×1300mm(W)×1860mm(H)
Work Station (Double Screen) Size	1520mm(L)×770mm(W)×1380m(H)
Gross Weight	1100kg
Conveyor Speed	0.22m/s
Conveyor Max Load	200kg belt
Dose per Inspection	less than 1.0μGy/h
Wire Resolution	0.0787mm Copper Wire
Spatial Resolution	Level: dia1.0mm, Vertical: dia1.3mm
Penetration	43mm Steel
Film Safety	Guarantee ISO1600 Film
X ray Leakage	less than 0.2μGy/h
Monitor	Philip high resolution 19inch color LCD display
Operation Temperature/Humidity	0°C-45°C/20%-95%(non-condensing)
Storage Temperature/Humidity	-20°C-60°C/20%-95%(non-condensing)
Operation Power	220VAC(±10%)50±3Hz
Power Consumption	1.0KW(max)

Project Reference





