

DSSP517 Infrared Thermal Imaging Temperature Measurement Walk-Through Detector



Temp Detect



Thermal Camera



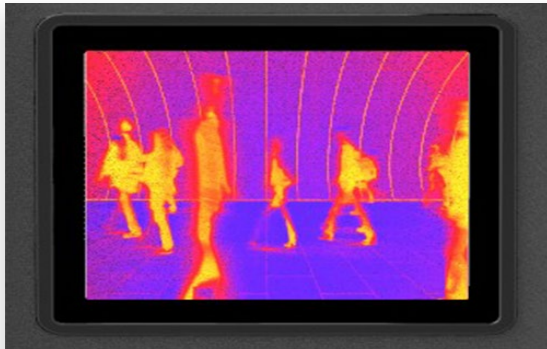
Extension Display



Multiple People Detection



PRODUCT FEATURES



12 Inch Touch Panel



Shows the temperature value at the left side, and the camera on the top captures visitor's face, and stream it live to the panel and display at the right side.



Accurate Measurement



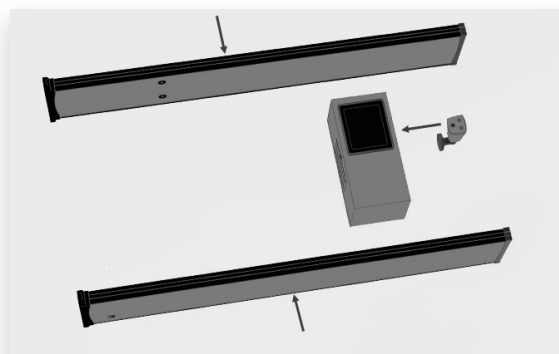
High sensitivity thermal module with 256x192 resolution; High quality optical module with 2MP resolution.



Passed/Alarmed Number



Displays the walk-through people number, metal alarm times, real time temperature, number of people in abnormal temperature.



Module Design



The machine mainly has three parts of compositions: two panels, a thermal camera, a case. Easy to assemble and maintain.

THREE MAIN COMPONENTS



Non-contact Temperature Measurement

/01

It is uses infrared thermal imaging technology to quickly capture temperature data, to measure temperature for people passing in non-contact way, and to prompt alarm the abnormal temperature through acousto-optic alarm, so as to effectively prevent large-scale disease infection.

Face Detector

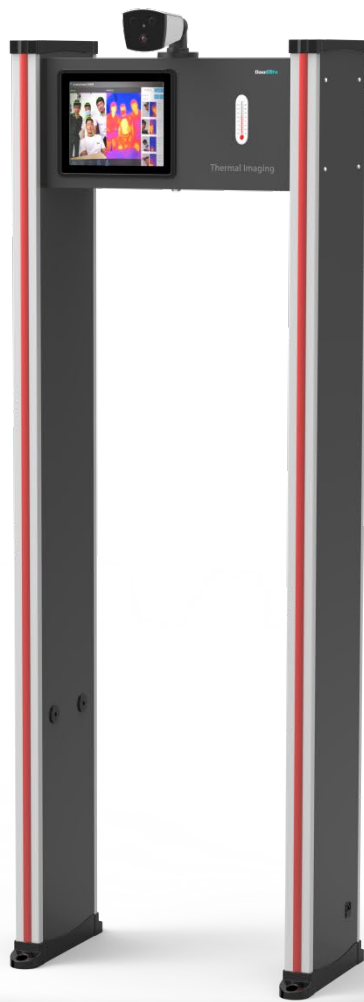
/02

It is integrating high-precision thermal imaging temperature sensor, built-in intelligent face capturing algorithm, image processing and other technologies. With face detection, body temperature detection, face capture and other powerful functions.

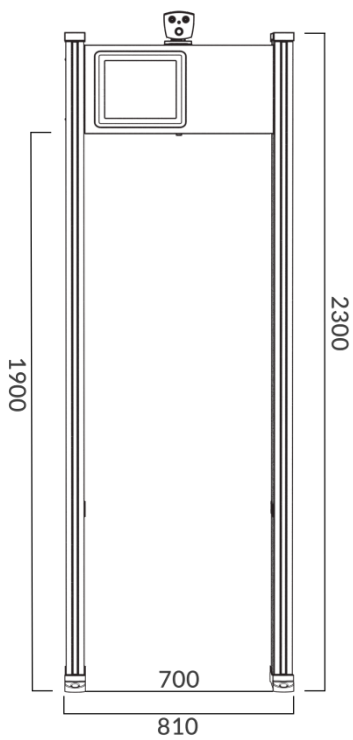
Metal Detector

/03

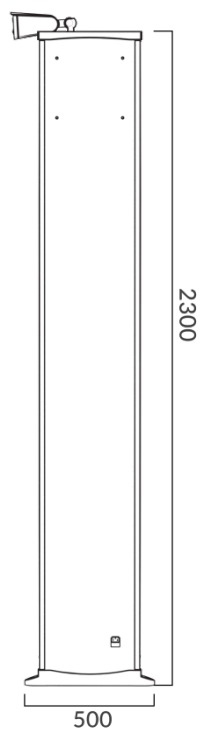
It is adopts the world's advanced electromagnetic compatibility design and anti-vibration design, with ultra-high sensitivity, strong ant interference ability and anti-seismic ability. It can carry out metal detection on the passing person, check whether they carry metal contraband or not, effectively assist in anti-epidemic, and realize public safety prevention and control.



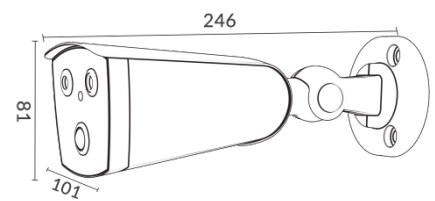
Front View



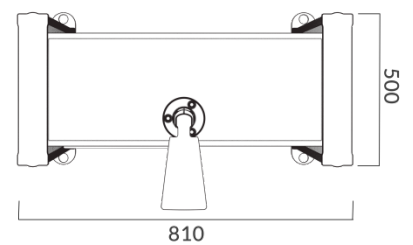
Lateral View



Thermal Camera



Top View



SPECIFICATIONS

General	Model No.	DSSP517
	Brand	Daosafe
	Framework Material	PVC Shell
	Outer Dimension	2300(H)×810(W)×500(D) mm
	Inner Dimension	1900(H)×700(W)×500(D) mm
	Gross Weight	80kg/pcs
	Touch Panel	12 inch
	Power Supply	187V~242VAC, 50/60Hz
	Web Client Language	English, Chinese
	Protective Level	thermal infrared imaging camera: IP66 Walk-through detector: IP53
	Power Consumption	<35W
	Operation Temperature	thermal infrared imaging camera: 10°C to 45°C Walk-through detector:-20°C to 85°C
	Operation Humidity	0 ~ 95% (No freeze)
	Detection Defense Zone	18 Zones Standard
Thermal Imaging	Sensor	Vanadium oxide uncooled sensor
	Max. Resolution	256*192
	Pixel Size	12μm
	Response Waveband	8 μ m ~ 14 μ M
	Frame Rate	15Hz
	Thermal Sensitivity (NETD)	≤ 60mk(@25°C,F#=1.0)
	Lens (Focal Length)	4mm
	Field of View	H: 35°, V: 27°
	Aperture	F1.0
	Pseudo Color	Black-Heat /White-Heat/Rainbow/Iron-Red up to 15 modes
Visible Light	Image Sensor	1/2.8" 2.0M Pixel CMOS
	Effective Resolution	1920*1080P
	Min. Illumination	Color: 0.005Lux @(F1.2,AGC ON) , B/W: 0.001Lux @(F1.2, AGC ON)
	Shutter Speed	1s to 1/100,000s
	Field of View	H: 84°, V: 45°
	Focal Length	4mm
	Day& Night switch	Mode iR cut filter with auto switch
	WDR range	80dB
	White Balance	Auto/Manual/ATW (Auto-tracking White Balance): Indoor/Outdoor/Daylight Lamp/Sodium Lamp

Feature	Bi-spectrum Image Fusion	Fusion view of thermal view and overlaid details of the optical channel
	Picture in Picture	Combines details of thermal and optical image PIP, overlay thermal image on optical image
Smart Function	Face snapping	Built-in deep learning AI algorithm, Support simultaneous detection of 20-30 faces
	Linkage alarm	Linkage of strobe light and audible alarm
	Temperature Measurement	Support global and local temperature
	Temperature Range	From -15°C to +150°C
	Temperature Accuracy	No black body: $\pm 0.5^{\circ}\text{C}$ With black body: $\pm 0.3^{\circ}\text{C}$
Network	Main Stream	Thermal: 25fps(1920x1080, 1280x720)
	Sub Stream	Thermal: 25fps(704x576, 352x288)
	Video Compression	H.264 (Baseline/Main/ High Profile)/MJPEG/H.265
	Audio Compression	G 71u/ G711a/G.7221/MP2L2/G.726/PCM
	Protocol	TCP/IP, ONVIF, GB/T28181, DHCP, RTP, RTSP, PPPoE, UPnP, UDP
	API	ONVIF(Profile S, Profile G, Profile T), SDK

PARAMETERS

Measurement Distance

Accuracy: $\pm 0.5^{\circ}\text{C}$ (no blackbody)
 Test Distance: 0.3m~3m
 Field Angle: (calculated value) 40°x30

Measurement Range

Measurement Range: 20°C~50°C
 Accuracy: $\pm 0.5^{\circ}\text{C}$
 (Algorithm Calibration, No Blackbody)

1 2
3 4

Environment

(For Indoor Use Only)
 Working Temperature: 10°C~35°C
 Storage Temperature: -25°C~75°C

Probe Parameter

Resolution: 160*120
 Spectral Range: 8μm ~ 14μm
 Non-Thermal f3.85mm\ f1.2lens
 Frame Rate: 15Hz
 Sensitivity: $\leq 60\text{mk}$ (F/1300K, 50Hz)

Infrared Thermal Imaging Temperature Measurement

- / Temperature exception detection
- / Linkage for audible alarm
- / Linkage of white strobe light alarm
- / Vanadium oxide uncooled sensor, resolution: 256 x 192
- / IP66 protective level
- / Operation temperature: 10°C to 45°C, < 95% RH
- / Positioning LED: Led indicators on side of panels are to accurately display where the prohibited goods are.

Metal Detection

Material: PVC appearance, and imported brand material is completely the same, beautiful, generous, fire, corrosion, moisture and anti - collision, deformation.

Metal detection: ultra-high detection sensitivity, excluding the influence of belt buckles, leather shoes and bras, It could detect precious metals such as copper, aluminum, and zinc above 150 grams, or controlled knives and guns. ☑

Multi-Area alarm: voice alarm, when a plurality of metals in different positions of the human body pass through the security gate, the alarm is raised simultaneously and the position of the plurality of metals can be indicated. Standard is 6 areas, 18 zones optional.

Sensitivity Settings: 0-99 level of sensitivity can be set.

People counting: display the number of walk-through people and people in alarm.

Positioning LED: Led indicators on side of panels are to accurately display where the prohibited goods are.

ADVANTAGES



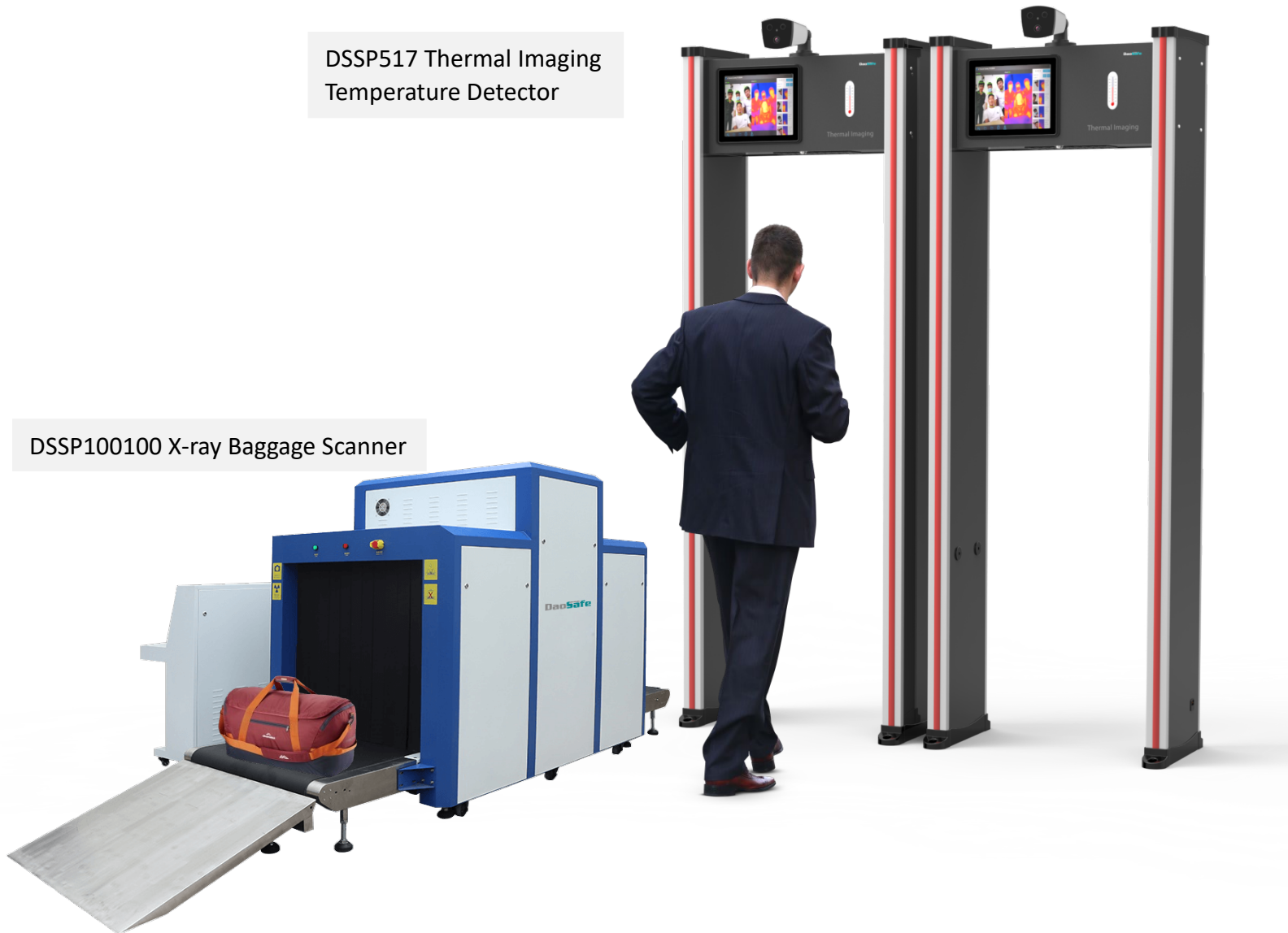
- ▶ **EXTENSION DISPLAY:**
Can syn with external large screen, real time monitoring.
- ▶ **Multi-target temperature display, outmost 15 person.**
- ▶ **QUICKLY PASSING:**
Broadcast interval 0.5 seconds, up to 120 persons per minute.
- ▶ **MULTI SCENE:**
Riding bike, wearing helmet, pregnant women, old people, children, passing safely.

Extension Display



DSSP517 Thermal Imaging Temperature Detector

DSSP100100 X-ray Baggage Scanner



Baggage Scanner Integrate with Thermal Imaging Temperature Detector

It's suitable for installing at airport, bus station, subway station, factory, exhibition to check visitors whether the temperature is normal during special period and whether they carry unauthorized objects or not.

- * Detect baggage's metal structure, display where is invisible to the naked eye.
- * People walk through the detector gate, if temperature is abnormal, the detector will alarm; if metal objects are detected, the detector will alarm.